



Design of a Wearable Embedded Device for Real-Time Fall Detection and Emergency Alert for the Elderly

Dr.G.Sujatha¹,(Associate Professor)

Dept of Electronics and Communication Engineering,
Arunai Engineering College, Tiruvannamalai, India.
Email address:suji7jes@gmail.com

Dharani S³

Dept of Electronics and Communication Engineering,
Arunai Engineering College, Tiruvannamalai, India.
Email address: leesu8780@gmail.com

Geethanjali G²

Dept of Electronics and Communication Engineering,
Arunai Engineering College, Tiruvannamalai, India.
Email address:geethanjaliigopal28082004@gmail.com

Dhanushiya M⁴

Dept of Electronics and Communication Engineering,
Arunai Engineering College, Tiruvannamalai, India.
Email address: ddhanushiya75@gmail.com

Abstracts- Injuries from falls are one of the most common and dangerous accidents affecting elderly individuals. Falls result in injuries, limited mobility, and dependency on other people. Prompt medical attention following a fall is crucial in reducing harmful consequences and keeping elderly people residing alone safe. In this proposed project, a wearable embedded system known as "Wearable Embedded Device for Fall Detection and Emergency Alert for Elderly People" is suggested. This proposed design uses motion sensors such as the accelerometer and gyroscope to detect the movement of the body of the patient. After detecting any significant changes in acceleration or an unusual body position that signifies the occurrence of a fall, the microcontroller inside analyze the data and determines whether there is indeed a case of a fall. If a fall occurs, the system will automatically trigger the communication module and send an emergency message via GSM, Wi-Fi, or Bluetooth to pre-set contacts, along with the GPS location of the user if available. The device will be made small enough to wear comfortably on the wrist, neck, or waist and be able to use less power to save battery life. The system is real-time, meaning that it acts quickly in times of emergencies. There may also be features such as an emergency button, buzzers, and application interface.

Keywords : Fall Detection, Elderly Care, IoT, Wearable Device, Accelerometer, GSM, Microcontroller, Health Monitoring.

I.INTRODUCTION

The global population of elderly people is increasing rapidly due to improvements in healthcare, nutrition, and living standards. As people age, they become more vulnerable to health problems such as reduced mobility, balance disorders, muscle weakness, and various chronic diseases. One of the most serious risks faced by elderly individuals is accidental falls. Falls are considered a major health concern

because they can lead to severe injuries such as fractures, head trauma, and long-term disability. In many situations, elderly people live alone or spend long periods without supervision, which makes it difficult for them to receive immediate help after a fall. Delayed medical assistance can worsen the condition and may even become life-threatening. Therefore, developing an effective system to detect falls and quickly notify caregivers or family members is extremely important for ensuring the safety and well-being of elderly individuals.

Recent advancements in embedded systems, wearable technology, and sensor-based monitoring have made it possible to design intelligent devices that can monitor human activities in real time. Wearable devices equipped with motion sensors and wireless communication modules can continuously track the movements of a person and detect unusual patterns that indicate a fall. These systems can automatically send alerts to caregivers, allowing them to provide immediate assistance. Such technologies play a significant role in improving elderly care, especially for individuals who live independently.

II. LITERATURE SURVEY

There has been an emphasis in literature about the need to develop real-time fall detection devices for older people since falls are one of the major causes of injury and admission into hospitals. Falls can result in severe injuries that could even lead to the death of older people. Older people are also vulnerable to delayed medical help since falls can increase their vulnerability. The traditional fall detection methods include the use of cameras, human supervision, and emergency alerts; however, such measures have proved to be insufficient for various reasons. For example, using cameras poses privacy risks, while human observation is very costly and cannot be done on a 24/7 basis for independent old people[1].



New methods such as the use of wearables that utilise accelerometer and gyroscope sensors to detect the motion of the body have been seen to work well to resolve the problem. In particular, literature indicates that the usage of sensors such as the MPU6050 with machine learning algorithms such as KNN, SVM, and Random Forest could result in a very effective fall detector system, with the best being Random Forest with an accuracy of 97% [2].

Modern research also considers the integration of health parameter monitoring sensors in wearables designed for fall detection. Modern sensors, like the MAX30100, have the ability to monitor essential health indicators such as heart rate and oxygen levels in the body, thereby increasing patient safety and giving health information in case of emergencies. With IoT technology and cloud-based services now integrated within fall detection wearables, fall detection systems have seen a considerable improvement in their performance. GSM technology is usually adopted for sending messages to patients' families or caregivers immediately after a fall has occurred. This makes sure that there is less time spent on responding to the emergency situation[3].

Even after all these achievements, there are still a number of challenges in developing a reliable fall detector system. Issues such as noise from sensors, motion artefacts, incorrect interpretation of movements and excessive power requirements may influence the performance of the system. However, another major problem faced by many existing fall detectors is the occurrence of false alarms generated by routine activities such as sudden sit-down and lie-down movements. Also, those that are highly dependent on Internet access or cloud computing may experience communication problems in some regions where there is a poor network connection. Thus, efforts are directed towards improving detection algorithms, lowering the power requirement, improving sensors' performance and establishing reliable communication in the development of the desired fall detection system [4].

III. PROBLEM STATEMENT

Elderly people are highly vulnerable to falls due to age-related factors such as poor coordination, reduced balance, and slower reaction times. These falls may cause serious injuries including bone fractures, head injuries, and brain trauma, which can lead to hospitalization, disability, or even death. In many situations, delays in providing immediate medical assistance after a fall can worsen the condition of the patient and increase the risk of severe complications.

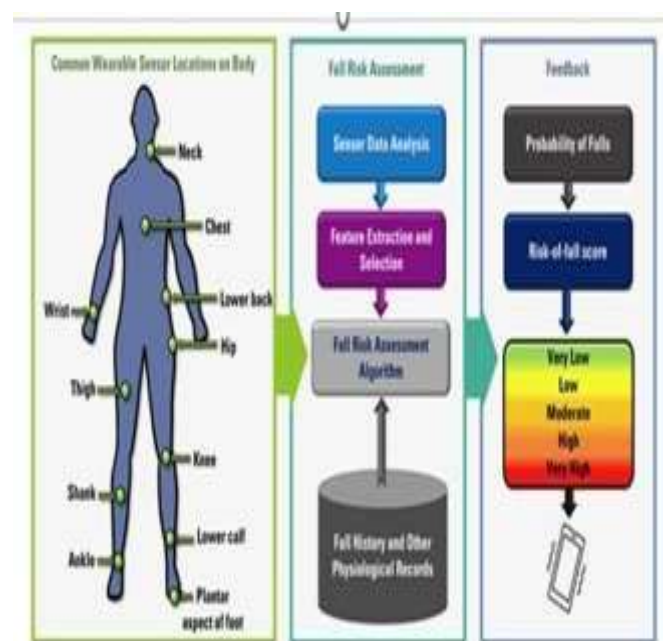
Existing fall detection systems have several limitations, as many rely on manual alert activation by the user, which is not possible if the person is unconscious or physically unable to respond. Continuous human monitoring is also expensive and impractical, especially for elderly individuals living independently. Therefore, there is a strong need for an affordable, automated, and efficient fall detection system

that can operate in real time, detect falls automatically, and send emergency alerts without human assistance.

IV. OBJECTIVES

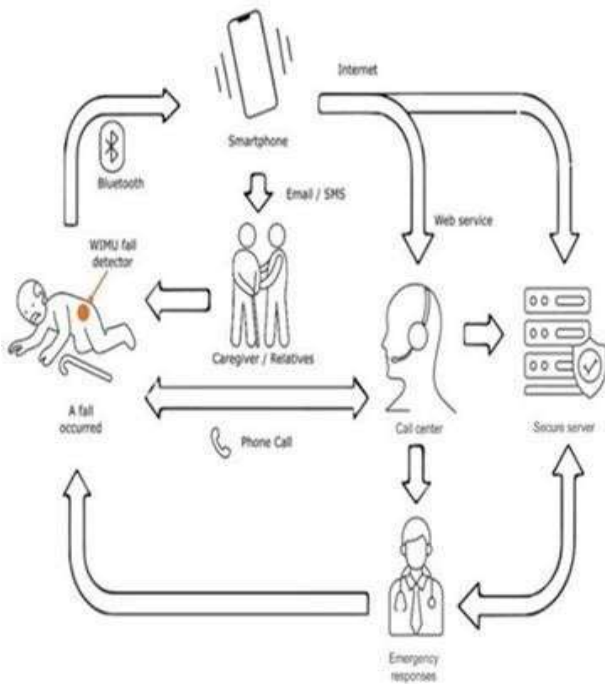
The main objective of this project is to develop a wearable device for real-time fall detection and emergency alert for elderly people. The system is designed to continuously monitor body movements using sensors such as an accelerometer and gyroscope to accurately identify falls and differentiate them from normal daily activities. By combining sensor inputs and optimizing detection algorithms, the device aims to minimize false notifications and improve the overall accuracy of fall detection.

The proposed system also focuses on providing immediate emergency notifications through GSM communication to caregivers or family members whenever a fall is detected. In addition, the device is intended to be lightweight, portable, low-cost, and easy to use so that it does not interfere with daily activities. The system is designed with energy efficiency in mind to ensure minimal power consumption while maintaining reliable continuous monitoring and communication during emergency situations.



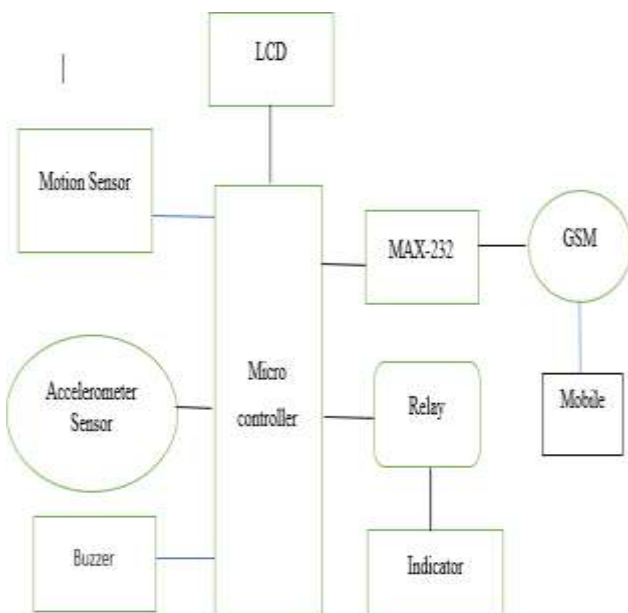
V. PROPOSED SYSTEM ARCHITECTURE

The designed system is comprised of motion sensors, microcontrollers, communication modules, and actuators, as shown below. The system collects information regarding the movement of the body using motion sensors such as accelerometers and motion sensors. Information about these movements is analysed using the algorithm within the microcontroller. When the algorithm detects a fall, the system produces audio alerts using the buzzer, SMS alerts using the GSM module, and visual alerts using the LCD screen. Also, indicators and relays may be incorporated to give alarms. They guarantee that the fall detection system is able to monitor, detect falls, and generate alerts effectively.



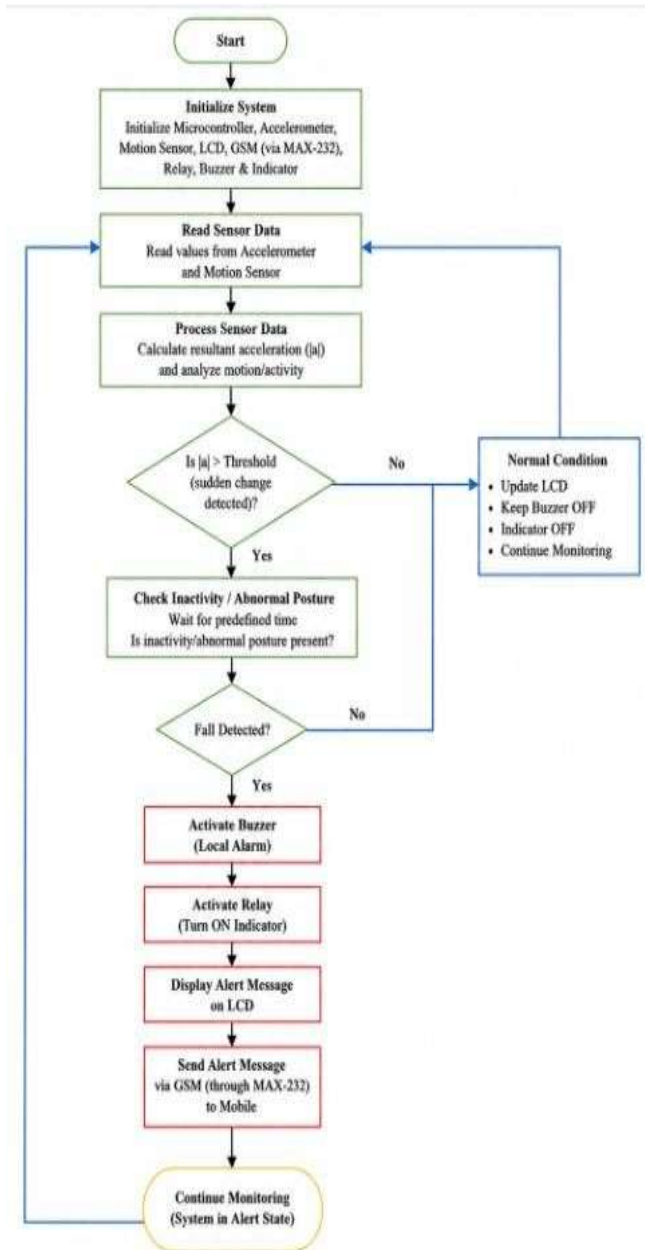
1. Block Diagram of the Proposed Wearable Fall Detection System

This block diagram represents the hardware architecture design of the fall detection wearable system. It illustrates how the different blocks work together, how signals flow through the system, and how they relate to each other. The input, processor, communicator, output, and power supply blocks are all illustrated in the diagram. The input block consists of the motion sensors, the accelerometer, and the motion sensor blocks. The microcontroller serves as the processing unit, performing all data analysis on the collected information. The GSM module and MAX232 serve as the communication units, allowing alert messages to be sent out.



2. Flowchart of Fall Detection Process

The flowchart shows the software functioning of the proposed system. First, the system initialises, then sensors are configured to acquire data continuously from the accelerometer. Subsequently, the microcontroller checks if the acquired value is above the preset threshold value. In the case where there is no occurrence of any fall, the procedure is repeated; however, if there is an occurrence of fall, then the buzzer alarm sounds, GSM alert message is sent, and an LCD display is done.



3. Algorithm used for Fall Detection

Fall detection using the proposed threshold-based algorithm takes place by monitoring the sudden movements of the body as well as detecting emergencies in elderly individuals. The sensors keep on sending data regarding the motion to the microcontroller. Under normal circumstances, when one is walking, sitting, or standing, the sensor readings stay within the predefined normal range. Once there is a sudden



change in the value of acceleration and motion, it becomes clear that the person fell down.

The accelerometer is used to measure the body movement along the three axes, while the motion sensor detects human motion. The microcontroller receives the input from both the sensors and checks it against the predefined threshold limit. Once the acceleration goes above the predefined limit and there is abnormal inactivity, the microcontroller detects that the person has fallen down.

Upon confirming the fall, the microcontroller then turns on the buzzer and indicators using the relay circuit as the local emergency signals. Additionally, the MAX-232 provides the interface to allow the microcontroller to send data to the GSM module. Once connected, the GSM module can then send a signal to the pre-defined cell phone numbers. The LCD monitors the status of the system and alerts.

- Step 1: Algorithm Begin the system operation.
- Step 2: Initialize accelerometer sensor, motion sensor, LCD, buzzer, relay, GSM module, and MAX-232.
- Step 3: Keep sensing sensor data from the accelerometer sensor and the motion sensor.
- Step 4: Compare the sensor data against pre-set threshold values.
- Step 5: Identify any irregular acceleration or abrupt movement of the body.
- Step 6: Test the idle state for a predetermined time period.
- Step 7: If fall condition is found
 - Emit buzzer sound.
 - Operate the indicator via relay activation.
 - Show emergency message on LCD screen.
 - Inform via SMS using GSM module.
- Step 8: Repeat the process continually.

4. Working Principle

The system works based on the continuous tracking of body movements by means of motion sensors and accelerometers. Both of these sensors work in connection to the microcontroller, which serves as the main central processing unit for the system. The accelerometer sensor measures the body movement and the tilt along several axes, whereas the motion sensor captures human activities and sudden changes in them.

In particular, the microcontroller processes sensor data continually. In a normal condition, sensor values stay within the predetermined limits. However, once a person experiences a fall or any other abnormal movements, an accelerometer records high values of acceleration and unusual orientation changes. Once a fall is determined, the controller triggers the buzzer and indicator via a relay circuit as a source of local alarms.

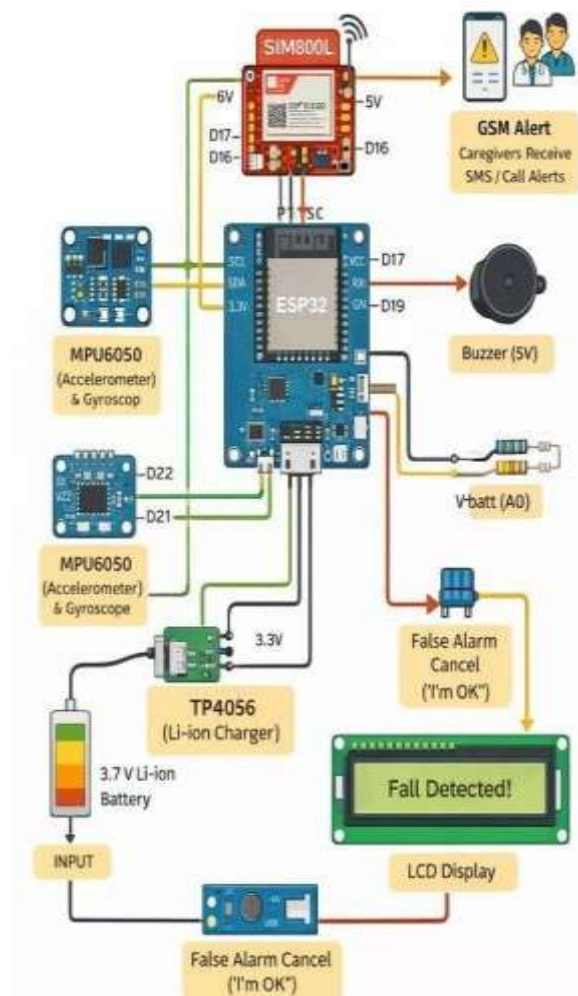
Additionally, the controller uses a MAX-232 module to establish a serial connection with the GSM module. Consequently, the GSM module sends out the alert to the mobile phones of a caretaker or family member. Finally, the LCD module displays messages about a system status,

including a normal condition, a fall detected, and an alert message sent.

VI. HARDWARE IMPLEMENTATION

The suggested fall detection system has various hardware modules working together to perform monitoring on the user and trigger appropriate emergency alarms. The microcontroller can be seen as the primary processor of the entire system. The processor is responsible for receiving and analysing information gathered by the sensors and managing all the operations performed by the device. The accelerometer is one of the main sensing devices of the system, as it detects body movements, position, and acceleration. A motion sensor is another key part of the system used to detect body movements and activities.

Apart from the sensors, the communication modules should be mentioned as well since they will enable successful data transfer and emergency notifications. The GSM module will allow sending SMS messages in case of a fall occurrence. A MAX232 module is used for the voltage level conversion. The system also has some output devices, like an LCD, buzzer, relay, and an indicator. An LCD display is necessary for displaying the system state. A buzzer is utilised for generating sound alarms, while a relay and an indicator can be used to manage other devices.





VII. SOFTWARE IMPLEMENTATION

Embedded programming has been used in software to make real-time sensing and falling detection possible. In the first place, software will initialise the sensors and the communication modules of the system. After that, the software keeps receiving data from sensors; this information undergoes analysis through fall detection algorithms.

These algorithms analyse whether there are any anomalies by comparing sensor readings with some threshold values. In case of exceeding sensor readings above thresholds, a falling scenario will be detected. At this point, some alarm measures will be undertaken; the buzzer will start buzzing, an SMS will be sent via the GSM module, and a notification will appear on the LCD display.

Fall detection relies on some threshold-based algorithm; however, additional acceleration and orientation measurements take place. Moreover, some filtering procedures are also used to minimise the occurrence of false alarms.

VIII. RESULTS AND DISCUSSION

The proposed fall detection system was tested based on several scenarios in order to determine its efficiency and reliability. As can be seen from the analysis presented above, the developed device is capable of detecting fall-related incidents and providing instant notification about it to the caretakers to deliver timely assistance to patients in emergency situations. Besides, the proposed fall detection system allows for monitoring the activity of users in real time with a small amount of delay. In order to ensure high accuracy and reliability of the fall detection system, it is important to note that the use of the accelerometer and the

accelerometer and the motion sensor will facilitate the accurate detection of changes in body position. Moreover, using a GSM module will help in transmitting notifications about falls to caregivers within minutes.

IX. FUTURE ENHANCEMENT

The proposed system incorporates machine learning algorithms to enhance detection accuracy and reliability. It utilizes health monitoring sensors such as heart rate and SpO₂ to continuously track the user's vital parameters. A mobile application is developed for real-time monitoring, while GPS technology ensures accurate location tracking during emergencies. Battery optimization techniques are implemented to extend device usage, and cloud-based data management is used for efficient storage and analysis of health data. The system also includes an AI-based fall detection mechanism and integrates with IoT devices for remote monitoring. Additionally, a voice calling feature is provided for emergency alerts. The device is designed to be

miniaturized and wearable for user comfort, supported by wireless and rechargeable battery systems. Furthermore, it enables multi-user monitoring, making it suitable for hospitals and health centers.

X. CONCLUSION

This paper describes the design and implementation of a wearable device intended to provide improved security and health care for aged persons. The presented technology employs motion sensors that monitor body movements and automatically recognise falls. Upon identification of the incident, it instantly raises an alarm and sends messages to the caregivers using GSM technology. The main advantages of the system under consideration include low costs, portability, lightweight, and user-friendly design. As a result, elderly patients could be constantly monitored without requiring any effort from their side, thus increasing security significantly. Moreover, the application of modern technologies such as machine learning in the future will further increase the efficiency of the technology. In summary, the described approach provides an effective way to enhance the safety of older people.

REFERENCES

- [1] Santhanamari G., Karthick R., and Praveen S., "A Smart Wearable-based Fall Detection and Health Monitoring System for Elderly Care Using IoT and Machine learning," IEEE Conference, 2025.
- [2] C. S. S., Kumar R., and Reddy P., "Smart Fall Detection System for Elderly People Using Arduino Uno", International Journal of Research and Technology inventions(IJRTI), vol. 8, no. 6, pp. 45 – 49, 2023.
- [3] Suresh Kumar B., Ramesh M., and Venkatesh K., "Smart Fall Detection System for Elderly People Using Arduino Uno", International Journal of Innovative inquiry in Science, Engineering and Technology(IJRSET), vol. 15, no. 2, pp. 120 – 126, 2026.
- [4] M. Mubashir, L. Shao, and L. Seed, "A review on fall detection methods and approaches," Neurocomputing, vol. 100, pp. 144- 152, 2013.
- [5] Li, Q., Wang, G., Wang, L., Zhang, Y., & Li, Z., "Elderly fall detection with accelerometer using lightweight neural networks," Electronics, vol. 8, no. 11, 2019.
- [6] "A.Bourke, J. O'Brien, and G. Lyons, 'Evaluation of a threshold-based tri-axial accelerometer fall detection algorithm,'" Gait & Posture, vol. 26, no. 2, pp. 194-199,2007
- [7] "T.Zhang, J.Wang, P.Liu, and J.Hou, 'Fall Detection Using a Wearable Sensor and an One-Class SVM Algorithm,'" Intelligent Computing in Signal Processing and Pattern Recognition, pp.858-863,2006



- [8] Patel S., Park H., Bonato P., et al., "A review of wearable sensors and systems with applications in rehabilitation, " *Journal of NeuroEngineering and Rehabilitation*, vol. 9, no. 1, pp. 1-17, 2012.
- [9] V. Bhor and D. Pandya, "Real time Bin Status Monitoring for Solid Waste Collection," *Int. J. Eng. Res. Technol.*, 2015.
- [10] F. Carreira, "Development of a mobile robot to deliver meals inside health services," in *Proc. IEEE Int. Symp. Industrial Electronics*, 2009.
- [11] B. M. Chinnathurai and R. Sivakumar, "Design and implementation of a semi-autonomous waste segregation robot," in *Proc. IEEE*, 2016.
- [12] A. M. F. Durrani and A. Farooq, "An Automated Waste Control Management System (AWCMS) by using Arduino," in *Proc. IEEE*, 2010.
- [13] Z. Khan, "Service robots for hospitals," in *Proc. IEEE Conf. Automation and Logistics*, 2011.
- [14] G. Karunasena and D. Amaratunga, "Automation and robotics in post-disaster waste management," in *Proc. Int. Symp. Automation and Robotics in Construction*, 2008.
- [15] K. Matsuo, "Experimental assessment of a waste management robot system," *Proc. IEEE 6th International Conference on Complex, Intelligent and Software Intensive Systems*, 2012.
- [16] N. Pallavi and K. Gosavi, "The Best IoT-based Smart Waste Management System," *IOSR Journal of Engineering*, 2007.
- [17] A.G. Ozkil, S. Dawids, and Z. Fan, "A design of a robotic automation system for transporting goods in hospitals," *Proc. IEEE International Symposium on Computational Intelligence in Robotics and Automation*, 2007.